

DONATA

ROGAN DRESSER

DESIGN BY: STUDIO LILLELUND



A BOLD STATEMENT, A PIECE WITH A REFINED CHARACTER

Perfectly blending graciousness and sturdiness. Our Rogan dresser is timeless. Enriched with concise clean lines in coffee bean and its appealing aesthetic further enhanced with a luxurious and lavish brushed brass contour, this piece can surely elevate any bedroom.

Matching nightstands and bed available.

Suitable for commercial and residential settings.

Combinando a la perfección gracia y robustez. Nuestra cómoda Rogan es atemporal. Enriquecida con líneas limpias y concisas en acabado coffee bean y su estética atractiva mejorada aún más con un lujoso contorno de latón cepillado, esta pieza seguramente puede elevar cualquier dormitorio.

Mesitas de noche y cama a juego disponibles.

Adecuado para entornos comerciales y residenciales.

DONATA

REFINED HANDCRAFT TECHNIQUE

The streamlined design of this dresser is audacious and contemporary. Featuring high-quality materials for durability.

Instantly attractive and perfect for spaces of clean, concise chic or minimalistic.

El diseño coordinado de esta cómoda es audaz y contemporáneo. Con materiales de alta calidad para mayor durabilidad.

Atractiva a primera vista y perfecto para espacios limpios, concisos, elegantes o minimalistas.



FINISHING DETAIL

Brushed Brass

ELEMENTS USED

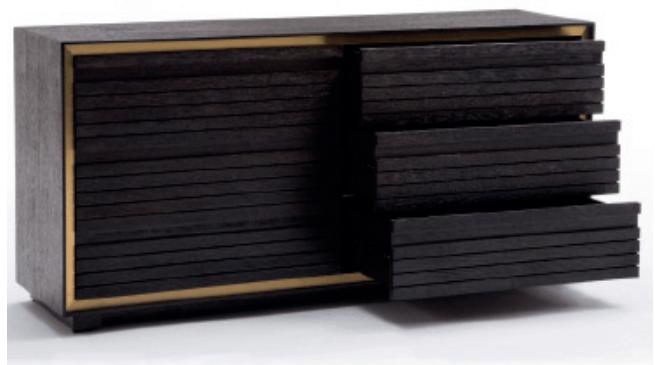
Engineered Wood MDF
Steel

STRUCTURE

Wood

COLLECTION

RAW NATURE



DETALLADO FINAL

Latón cepillado

ELEMENTOS UTILISADOS

Acero
Madera

ESTRUCTURA

Madera

COLECCION

RAW NATURE

DONATA

ROGAN DRESSER

DESIGN BY: STUDIO LILLELUND



REF: 107023

MOQ: 20

Dresser
C moda

DIMENSIONS

Overall Dimensions	W172.6 x D48.2 x H82.2 / W68 x D19 x H32.5"
--------------------	--

Gross Weight	
--------------	--

Net Weight	
------------	--

Pack	1 pc / 1 ctn
------	--------------

Carton Size	
-------------	--

CBM	1.017
-----	-------

20FT Container	
----------------	--

40GP Container	
----------------	--

40HQ Container	
----------------	--

CONSTRUCTION

Material / Cover	Wood MDF
------------------	----------

Frame Construction	Wood
--------------------	------

Base / Legs	Wood
-------------	------

Base Finish	Coffee bean
-------------	-------------

Structure Warranty	1 year
--------------------	--------

DETAILS

SKU Number	107023
------------	--------

Collection	Raw Nature
------------	------------

Origin	Vietnam
--------	---------

Assembly required	No
-------------------	----

DONATA

ROGAN DRESSER

DESIGN BY: STUDIO LILLELUND



STRUCTURE

Precision-cut engineered hardwood structure

COVERS & UPHOLSTERY

N/A

BASE & POLES

Engineered wood MDF

ESTRUCTURA

Estructura de madera dura diseñado con corte de precisión reforzado

COJINES & CUVIERTAS

N/D

BASES & POSTES

Madera aglomerada MDF

BRUSHED BRASS

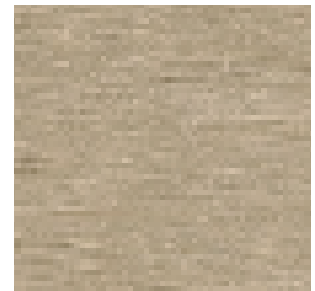


BASE

Wood

BASE

Madera



DONATA

PIECE ELEMENTS

Full width 56.6cm

Full height 87.5cm



Full depth 60cm

