

# DONATA

---

## ROGAN BED SUPERKING

DESIGN BY: STUDIO LILLELUND



### A BOLD STATEMENT, A PIECE WITH A REFINED CHARACTER

Perfectly blending graciousness and sturdiness. Our Rogan Bed is timeless. Enriched with concise clean lines in coffee bean and its appealing aesthetic further enhanced with a luxurious and lavish brushed brass contour, this bed can surely elevate any bedroom.

Matching nightstands and dresser available.

Suitable for commercial and residential settings.

Mezclando a la perfección gracia y robustez. Nuestra cama Rogan es atemporal. Enriquecida con líneas limpias y concisas en acabado coffee bean y su estética atractiva mejorada aún más con un lujoso contorno de latón bruñido, esta pieza seguramente puede elevar cualquier dormitorio.

Mesitas de noche y cama a juego disponibles.

Adecuado para entornos comerciales y residenciales.

# DONATA

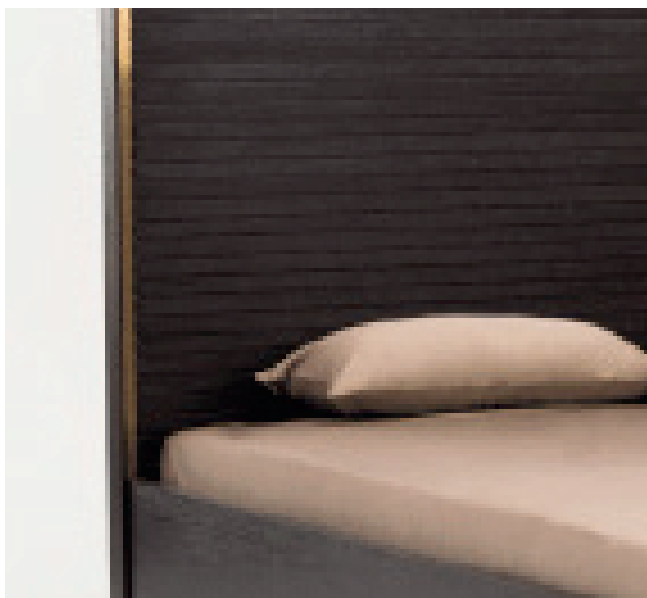
## REFINED HANDCRAFT TECHNIQUE

The streamlined design of this bed is audacious and contemporary. Featuring high-quality materials for durability.

Instantly attractive and perfect for spaces of clean, concise chic or minimalistic.

El diseño oordinado de esta cama es audaz y contemporáneo. Con materiales de alta calidad para mayor durabilidad.

Atractivo a primera vista y perfecta para espacios limpios, concisos, elegantes o minimalistas.



## FINISHING DETAIL

Brushed Brass

## ELEMENTS USED

Engineered Wood MDF  
Steel

## STRUCTURE

Wood

## COLLECTION

RAW NATURE

## DETALLADO FINAL

Latón cepillado

## ELEMENTOS UTILISADOS

Acero  
Madera

## ESTRUCTURA

Madera

## COLECCION

RAW NATURE

# DONATA

## ROGAN BED SUPERKING

DESIGN BY: STUDIO LILLELUND



REF: 107016

MOQ: 10

Bed - King size  
Cama - King size

### DIMENSIONS

Overall Dimensions	W214 x D237 x H148 cm / W84 x D93.5 x H58"
--------------------	---

Gross Weight	
--------------	--

Net Weight	
------------	--

Pack	1 pc / 1 ctn
------	--------------

Carton Size	
-------------	--

CBM	0.941
-----	-------

20FT Container	
----------------	--

40GP Container	
----------------	--

40HQ Container	
----------------	--

### CONSTRUCTION

Material / Cover	Wood MDF
------------------	----------

Frame Construction	Wood
--------------------	------

Base / Legs	Wood
-------------	------

Base Finish	Coffee bean
-------------	-------------

Structure Warranty	1 year
--------------------	--------

### DETAILS

SKU Number	107016
------------	--------

Collection	Raw Nature
------------	------------

Origin	Vietnam
--------	---------

Assembly required	Yes
-------------------	-----

# DONATA

## ROGAN BED SUPERKING

DESIGN BY: STUDIO LILLELUND



### STRUCTURE

Precision-cut engineered hardwood frame reinforced with corner blocking

### COVERS & UPHOLSTERY

The upholstery can not be removed. Fabric dye lots vary, pieces purchased at different times may not match exactly.

### BASE & POLES

Engineered wood MDF

### ESTRUCTURA

Marco de madera dura diseñado con corte de precisión reforzado en esquinas

### COJINES & CUVIERTAS

La tapicería no se puede quitar.  
Los lotes de tintes de tela varían, las piezas compradas en diferentes momentos pueden no coincidir exactamente.

### BASES & POSTES

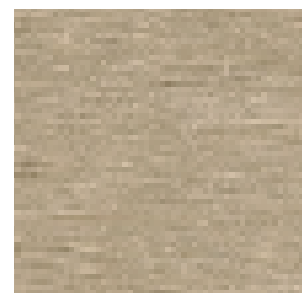
Madera aglomerada MDF

### BRUSHED BRASS



**BASE**  
Wood

**BASE**  
Madera



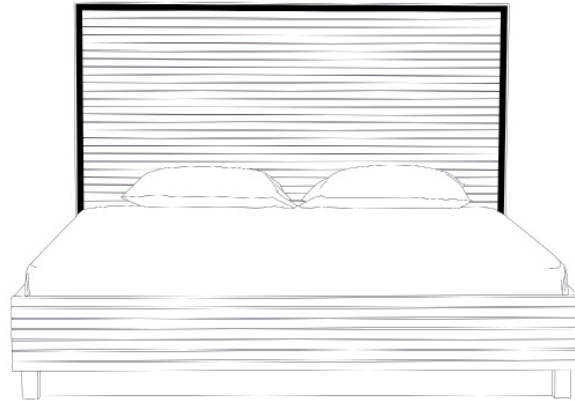
---

# DONATA

PIECE ELEMENTS

Full width 214cm

Full height 148cm



Full depth 237cm

